



PRESS RELEASE

MROPENEVO AT ECR 2025 WITH AN AI-READY UPGRADE FOR FURTHER ENHANCED IMAGE QUALITY AND FASTER EXAMINATIONS; NEW SYSTEM SOON AVAILABLE IN GEORGIA.

Genoa, February, 26th 2025 - Unlocking the future of joint and spine imaging with the Latest Evolution of MROpenEvo: the only truly open MRI System at ECR 2025.

Thanks to the optimization of key technical features, the latest version of the helium-free, MgB₂-based MRI scanner delivers exceptional image quality while reducing scan times by up to 50%.

Discover the innovative features of MROpenEvo, a groundbreaking MRI system specifically designed for joint, neuro, and spine imaging. It offers ample space for children, larger patients, and individuals with claustrophobia, ensuring comfort for all.

The new image acquisition algorithm, based on the "compressed sensing" technique, combines parallel imaging with sparse data sampling and iterative reconstruction. This combination leads to faster scan times and enhanced resolution. The "compressed sensing" technique is applicable to both 2D and 3D sequences across all anatomies.

In the meantime, the patient centric design MRI system developed by ASG Superconductors arrives in another new country: MROpenEvo will be shortly available in Georgia @ Tbilisi State Medical University and Ingorokva High Medical Technology University Clinic.

Prof. Giorgi Ingorokva declared: "I am proud announcing that our hospital will be the first clinic in Georgia to install the groundbreaking Open MRI system. It will enhance diagnostic capabilities and improve patient care in the region"

Nowadays MROpen Evo is available in USA, Canada, UK, Italy, Portugal, Kuwait, and the innovative MgB₂ superconducting technology – the key element driving the unique and distinctive open design - has reached over 2.5 million hours of operation.

Join us at ECR2025 in Vienna, Hall X4, Booth 410, to experience MROpen Evo with our experts and discover how this innovative and unparalleled MRI system can enhance your practice.








MRI SCAN TIME REDUCED UP TO 50% AT EQUAL QUALITY IMAGE.

Thanks to this evolution and overall optimization of technical key features, the latest version of the cryogen-free MgB2 based MRI scanner, provides equal quality image and a scan time reduced up to 50%.

BEFORE
3'35"
Voxel 1,1x1,3x5

LUMBAR SPINE - SAGITTAL FSE T2

AFTER
2'50"
Voxel 0,9x1,1x5




MRI SCAN TIME REDUCED UP TO 50% AT EQUAL QUALITY IMAGE.

Having reduced the acquisition time, the routine spine protocol, for example, can be performed in only 12 minutes in either sitting or supine position, allowing to scan 3 patients per hour.

BEFORE
5'00"
Voxel 1,15x1,3x5

LUMBAR SPINE - SAGITTAL FIR PD

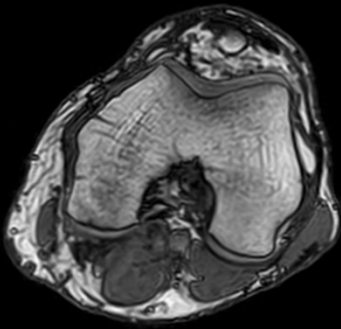
AFTER
4'30"
Voxel 1x1,15x5



PRESS RELEASE



MRI SCAN TIME REDUCED UP TO 50% AT EQUAL QUALITY IMAGE.



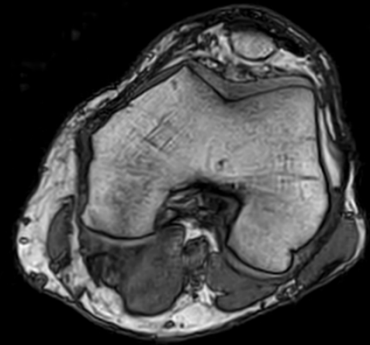
BEFORE

4'20"

Voxel 1x1x1

KNEE – AXIAL STSS 3D

The new image acquisition based on the Compressed Sensing technique merges parallel imaging concepts with sparse data sampling and iterative reconstruction to shorten scan time and to improve resolution. The technique can be used in 2D and 3D sequences for all anatomies.



AFTER

2'35"

Voxel 0,85x0,85x1



TRANSFORMING JOINT AND SPINE IMAGING: THE MROpen EVO REVOLUTION

As the field of medical imaging evolves, radiologists and health administrators seek innovative solutions to enhance patient care, financial benefit and operational efficiency. One groundbreaking advancement is the MROpen EVO—an MRI system designed specifically for complex joint and spine imaging. This cutting-edge technology promises to redefine orthopedic diagnostics, offering both clinical and financial benefits that are hard to ignore.



PRESS RELEASE



UNLOCKING NEW POTENTIAL

MROpen EVO unique design accommodates weight-bearing MRI scans, setting it apart from conventional systems. Imagine the possibilities: patients can undergo scans while standing, leading to more accurate assessments of joint function.

WHAT DOES THIS MEAN FOR YOUR PRACTICE?

The ability to perform weight-bearing MRIs not only enhances diagnostic capabilities but also opens the door to increased referrals in orthopedic and sports surgery.

IT ALSO IS CLEARLY PREFERRED FOR CHILDREN, FEARFUL PATIENTS AND LARGER PATIENTS.

Radiologists equipped with this advanced technology can provide invaluable insights that may lead to better treatment decisions, attracting a broader range of patients and specialists.



FINANCIAL OPPORTUNITIES

In addition to its clinical advantages, the MROpen EVO presents significant financial opportunities. One of its standout features is the ability to bill for a second MRI in certain complex joint scans. This means your practice can potentially increase its revenue streams while delivering exceptional patient care.

As healthcare providers face mounting pressure to optimize costs while maintaining high-quality care, the MROpen EVO stands out as a viable solution that balances these demands.

BY INTEGRATING THIS ADVANCED MRI INTO YOUR FACILITY, YOU'RE NOT JUST INVESTING IN TECHNOLOGY, YOU'RE ENHANCING THE OVERALL VALUE OF YOUR SERVICES.